

MASSIVE CRISIS ON CORONAVIRUS DISEASE (COVID-19) – AN OUTBREAK SITUATION: STAY AWARE & BE PROTECTIVE

AMIT DUTTA¹, Yuvraj Mohite², and Ravidrakumar Bakal³

¹Affiliation not available

²Smt. Sindhutai Jadhao Arts and Science College, Mehkar.

³Dr. Rajendra Gode Institute of Pharmacy, Amravati

April 28, 2020

Abstract

Coronaviruses are a large group of viruses which are found in avian and mammalian species. It has been reported that, the identification and characterization of a novel coronavirus (2019-nCoV) which caused a pandemic of acute respiratory syndrome in humans in Wuhan, China. By 26 January 2020 it has caused 2,050 laboratory-confirmed infections with 56 fatal cases. Furthermore, it was found that 2019-nCoV is 96% identical at the whole-genome level to a bat coronavirus. The new coronavirus SARS-CoV-2 binds with human respiratory cells in order to hijack them to produce more viruses. The new virus attaches to a receptor on respiratory cells called angiotensin-converting ACE2. The most abundant protein in coronavirus is the nucleocapsid protein.

Hosted file

Review Paper@ Dr. Amit Kumar Dutta.doc available at <https://authorea.com/users/306975/articles/437987-massive-crisis-on-coronavirus-disease-covid-19-an-outbreak-situation-stay-aware-be-protective>

Kindly insert after line no 27:

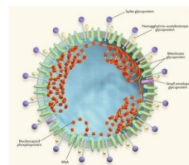


Figure:1 The Morphology of SARS Associated Corona Virus^(ZhouYadi et al, 2019)

Kindly insert after line number 48.



Figure 2: The Number of Corona Virus Cases Confirmed (WHO Report, 18-03-2020)

Hosted file

Figures_Corona@ Dr- Amit Kumar Dutta.pdf available at <https://authorea.com/users/306975/articles/437987-massive-crisis-on-coronavirus-disease-covid-19-an-outbreak-situation-stay-aware-be-protective>