

**Figure 1.** Sugar compositions of developing *G. elata* tubers



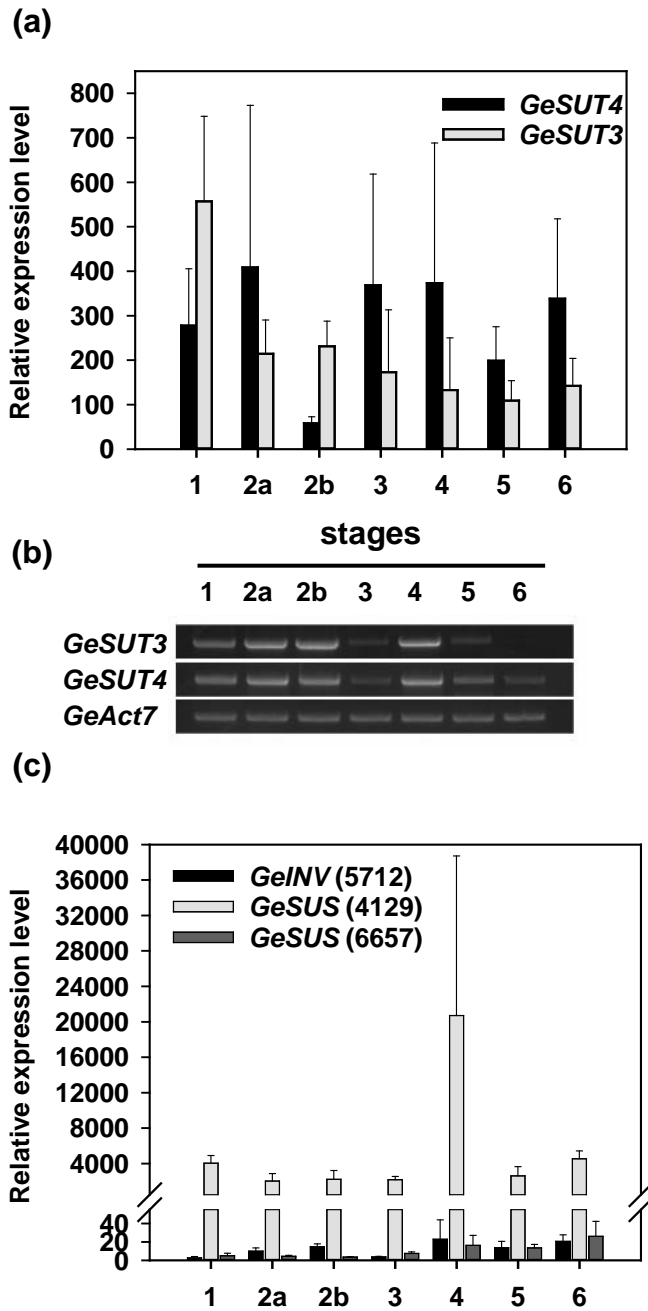


Figure 3. Expression of *GeSUT* sucrose transporters in *G. elata* tubers.

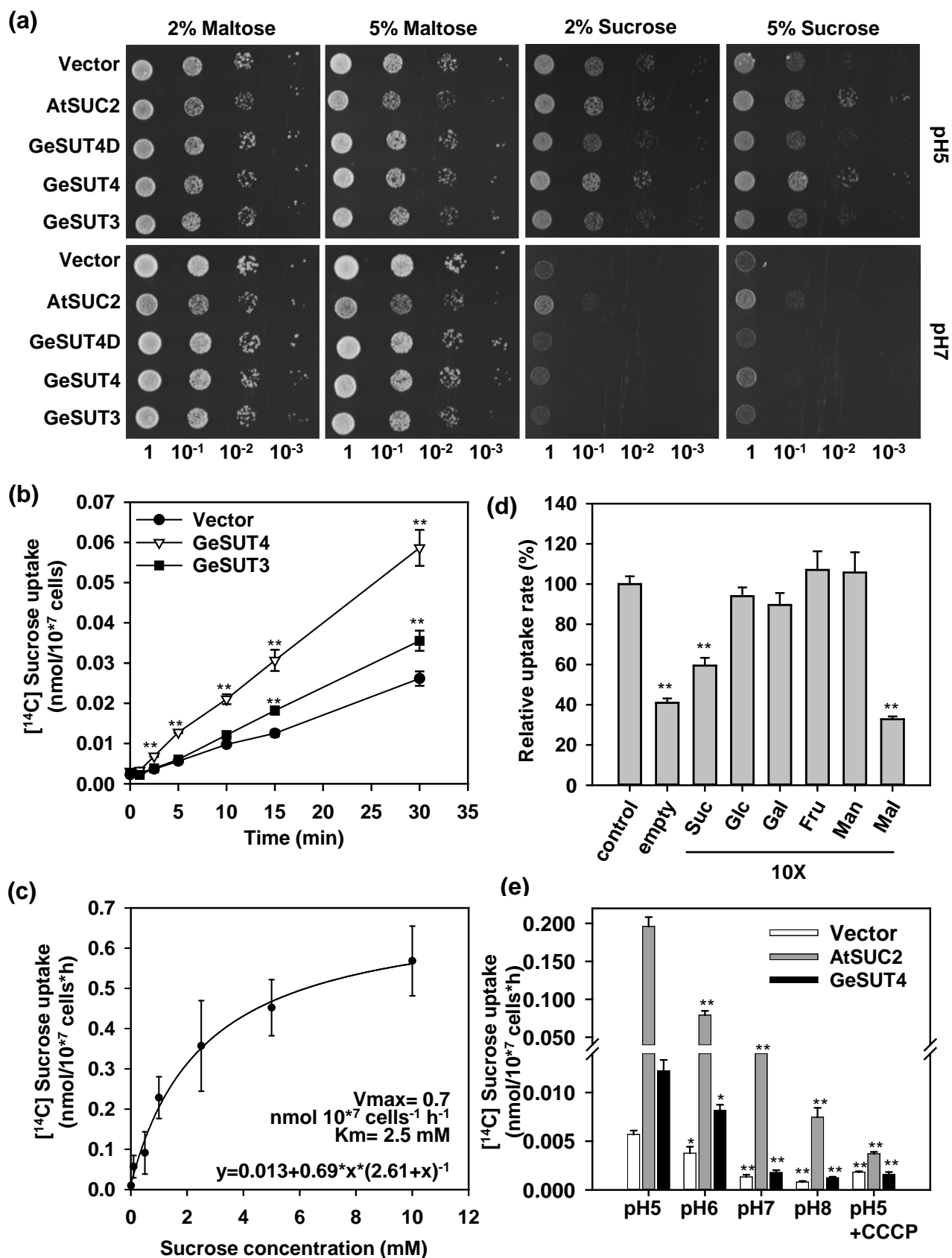
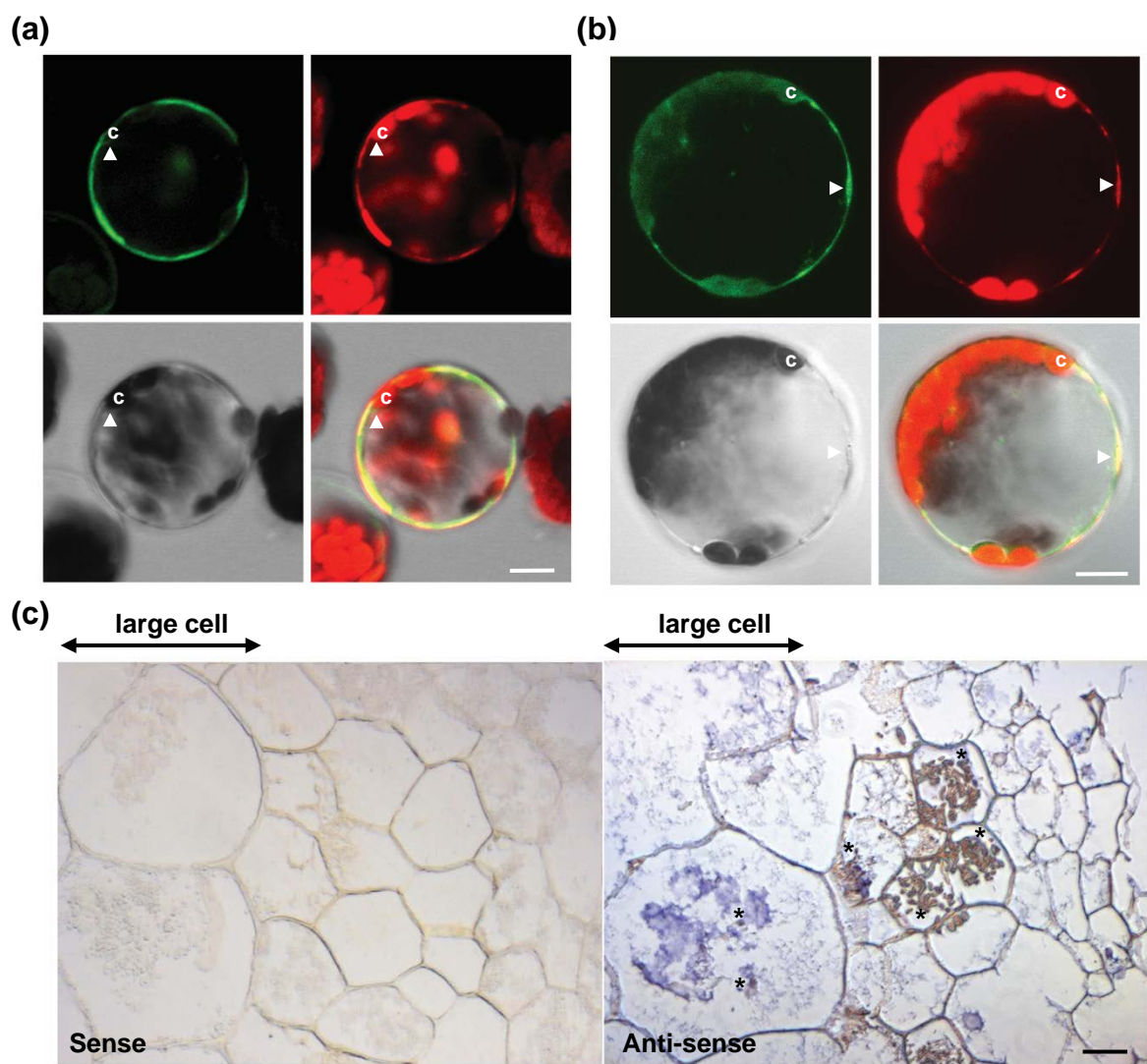


Figure 4. Transport activity of *GeSUT4* in yeast.



**Figure 5. Localization of *GeSUT4* expression.**

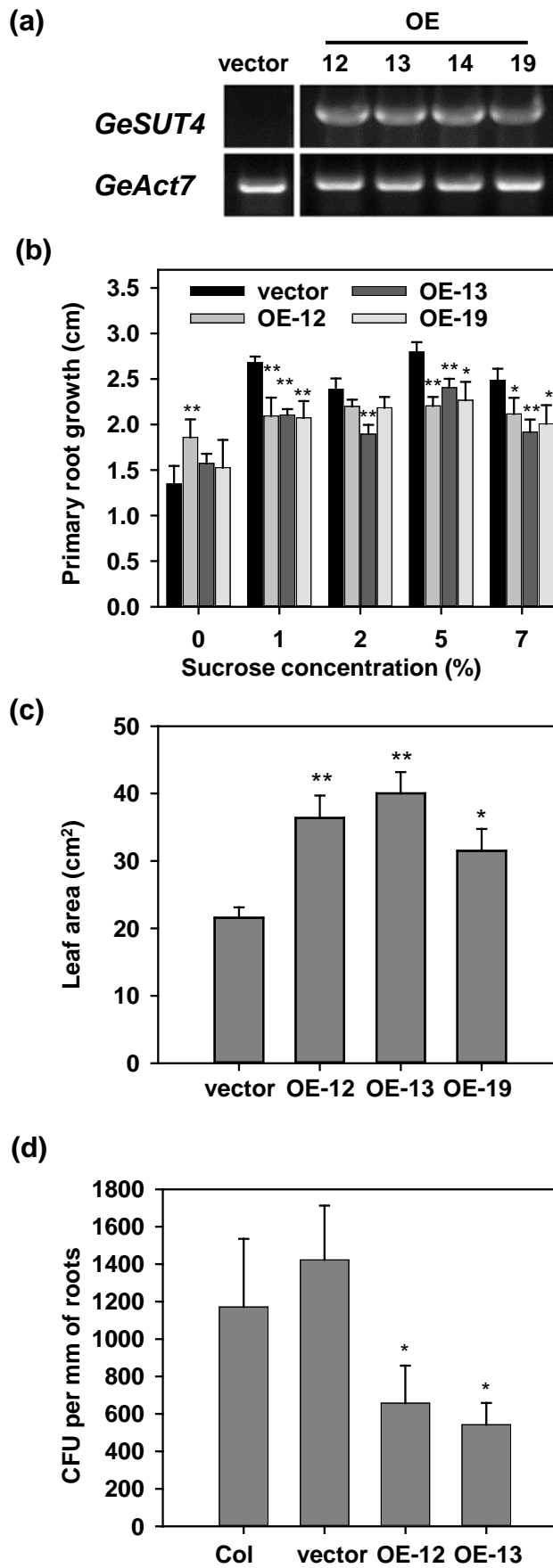


Figure 6. Effect of overexpressing *GeSUT4* on *Arabidopsis* growth.

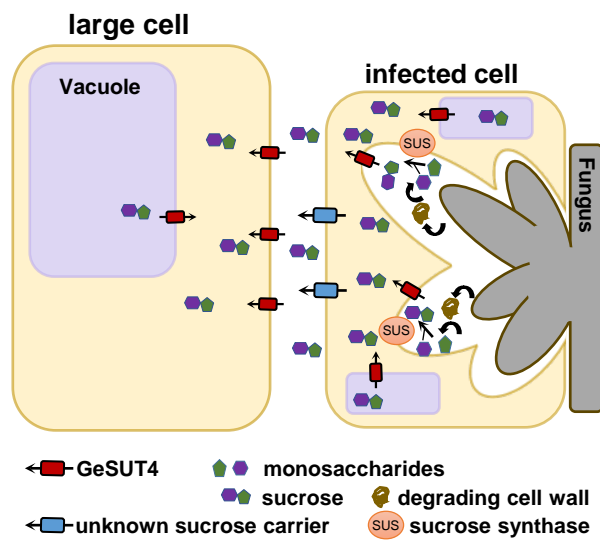


Figure 7. A model for *GeSUT4* function in *G. elata*.