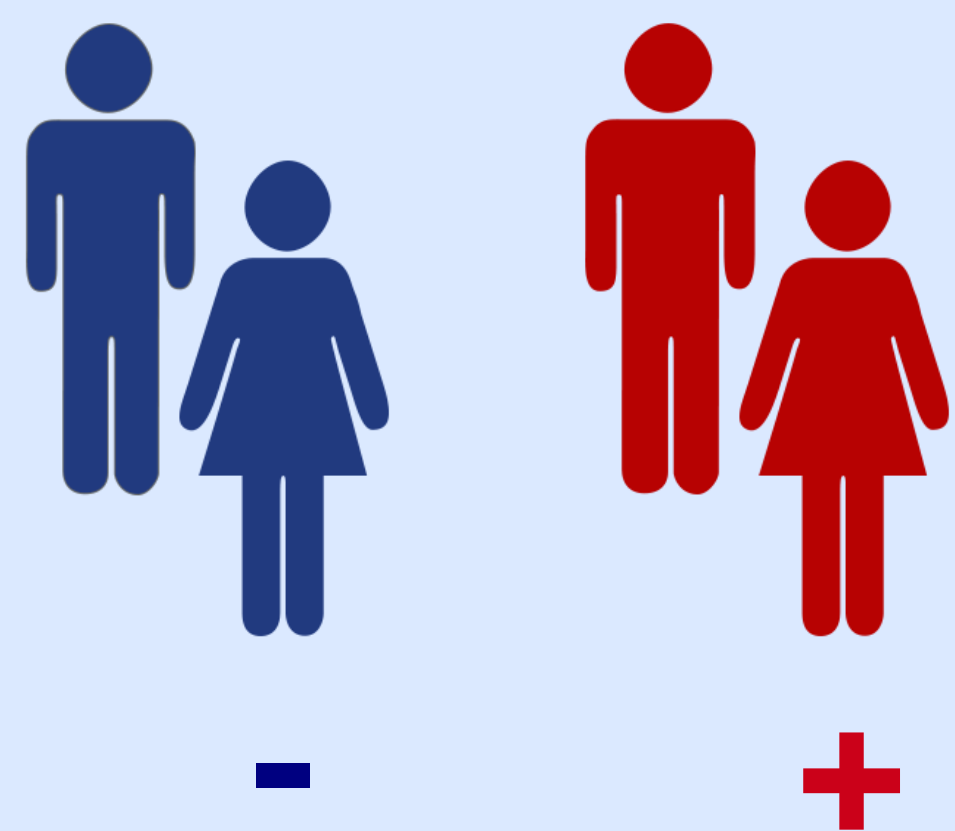


Study subjects

AD patients

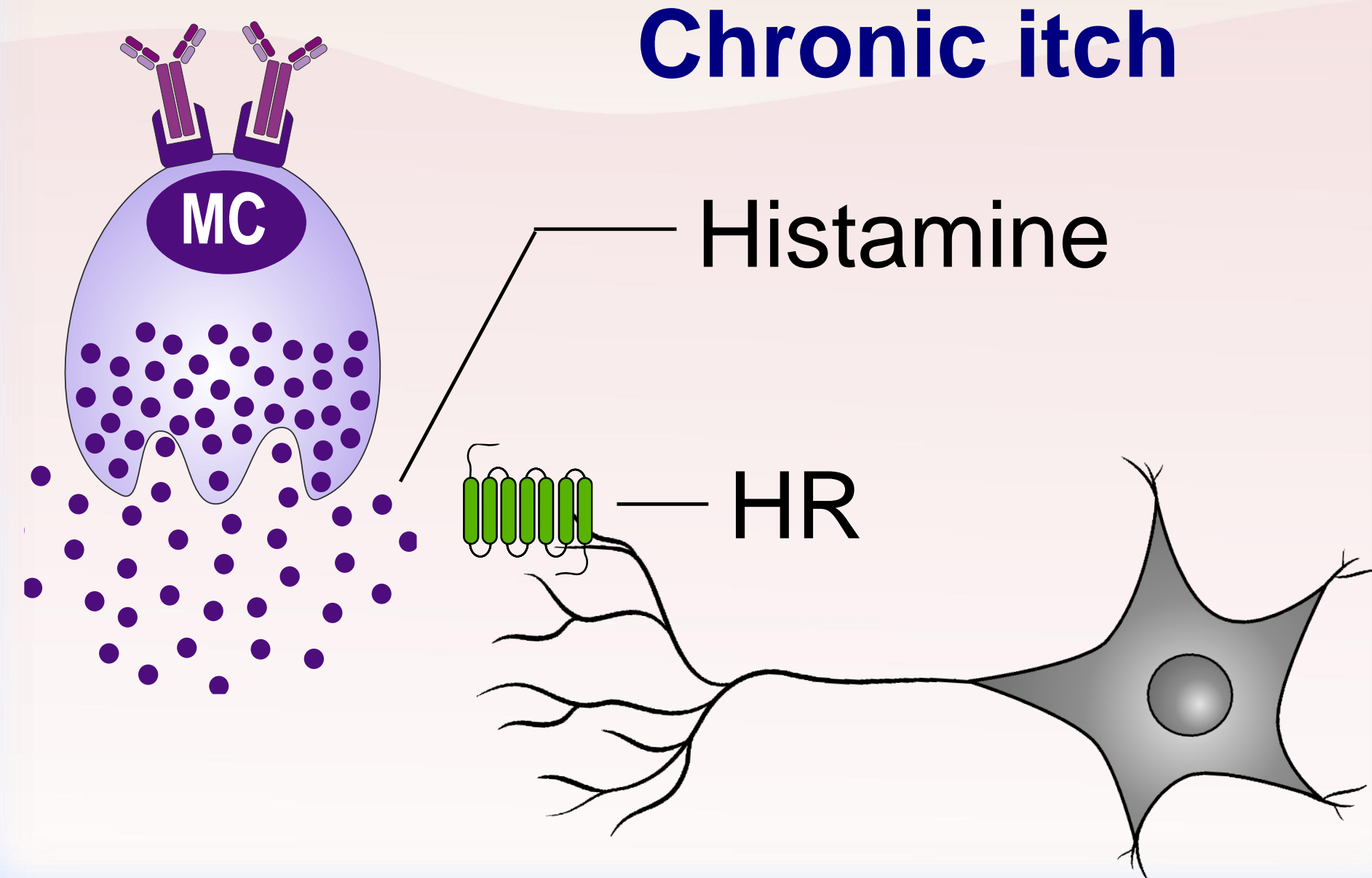


Acute itch
flares



Disrupted skin barrier

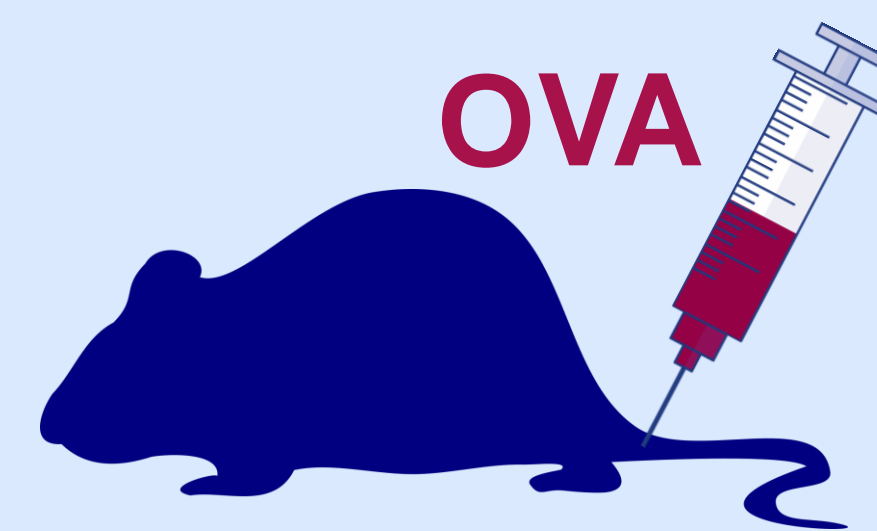
Chronic itch



Study design

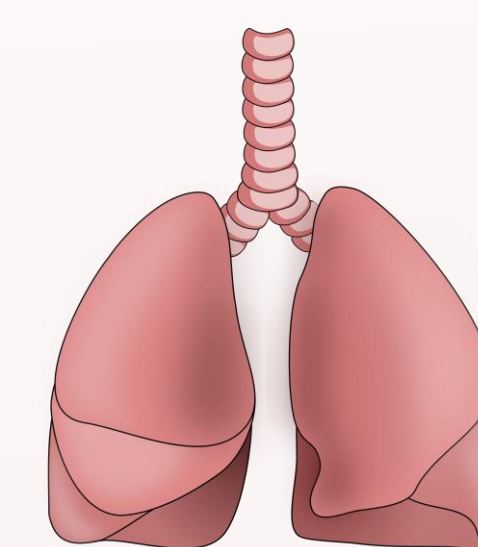
AD-like disease OVA sensitized

Sash -/-
Bas-TRECK
Anti-CD200R

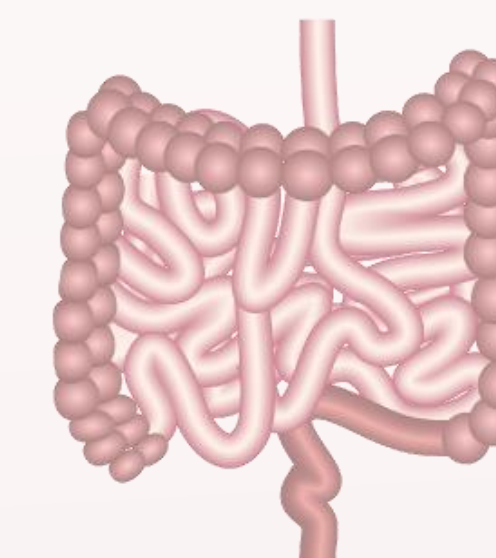


Acute itch?

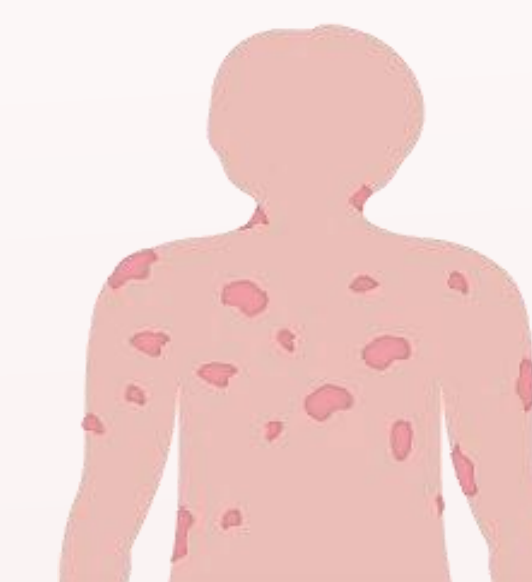
Does a chronically inflamed environment promote basophil neuronal communication?



Allergic
asthma/rhinitis



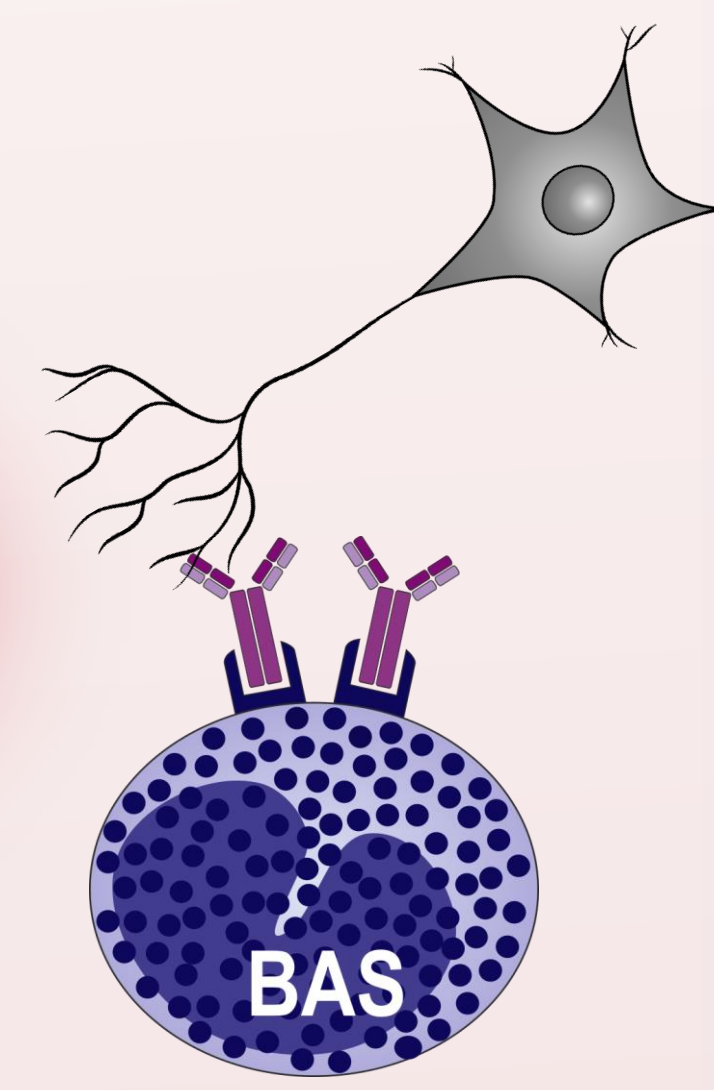
Food
allergy



Chronic
urticaria

Chronically inflamed
environment
(e.g., continuous
allergen exposure)

Chemo-
attractants



Basophil
infiltration

**Basophil LTC₄-CysLTR2
acute itch axis**