



Figure 1: A. Right mid thyroid lobe transverse view; B. Left inferior thyroid lobe transverse view; C. Left thyroid lobe longitudinal view.

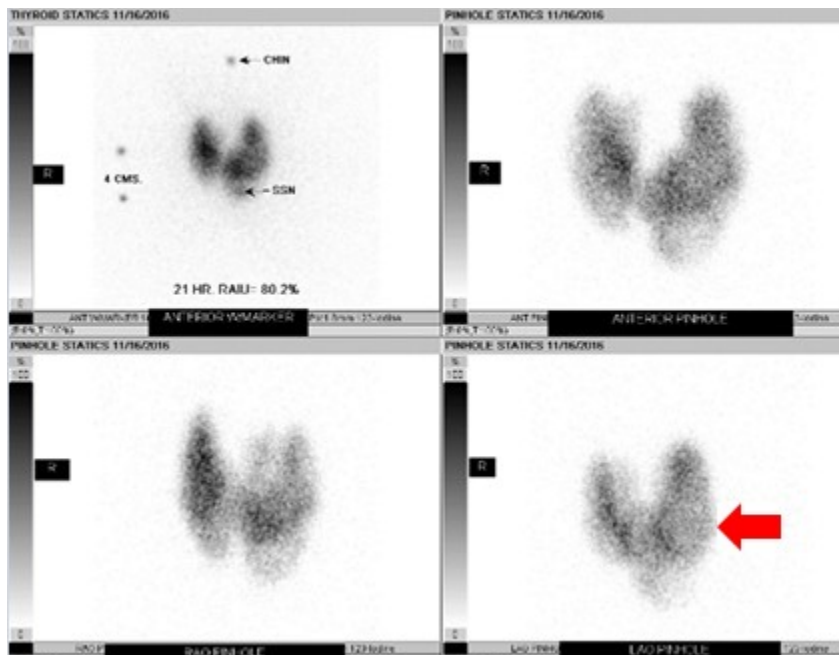


Figure 2: Multiple views of thyroid gland 21 hours after radioactive iodine-123 administration- uptake at 80.2%. Foci of decreased radiotracer uptake in left thyroid lobe (Arrow). Diagnosis: Graves' disease.

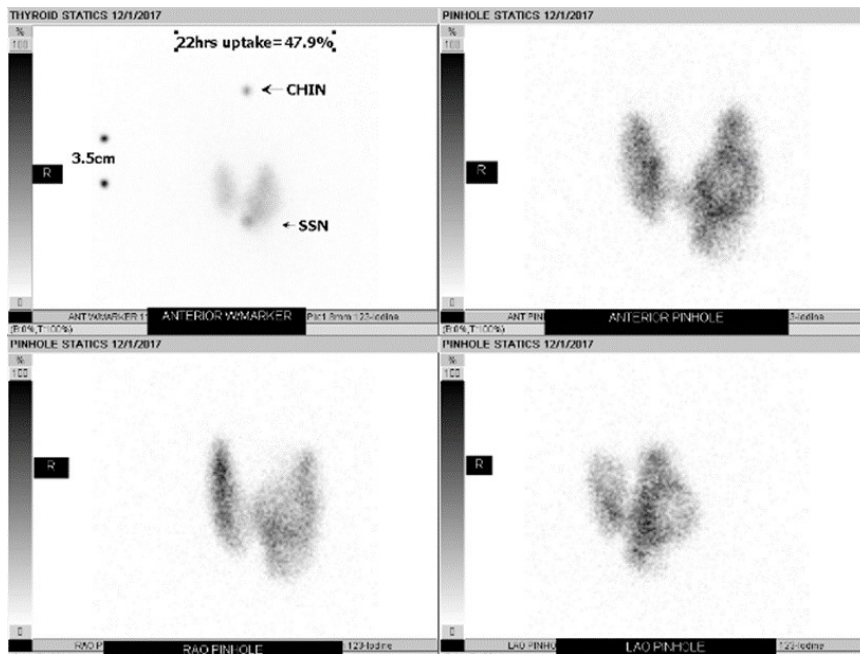


Figure 3: Multiple views of thyroid gland 22 hours after radioactive iodine-123 administration- uptake at 47.9%. Diagnosis: toxic multinodular goiter.

Thyroid Uptake and Scan (12/1/17)

RAI Uptake is 47.9%

Total gland size decreased from prior uptake and scan

Impression: Toxic multinodular goiter