

## PREVIOUSLY PROPOSED CARBONATE CAPROCK NOMENCLATURE

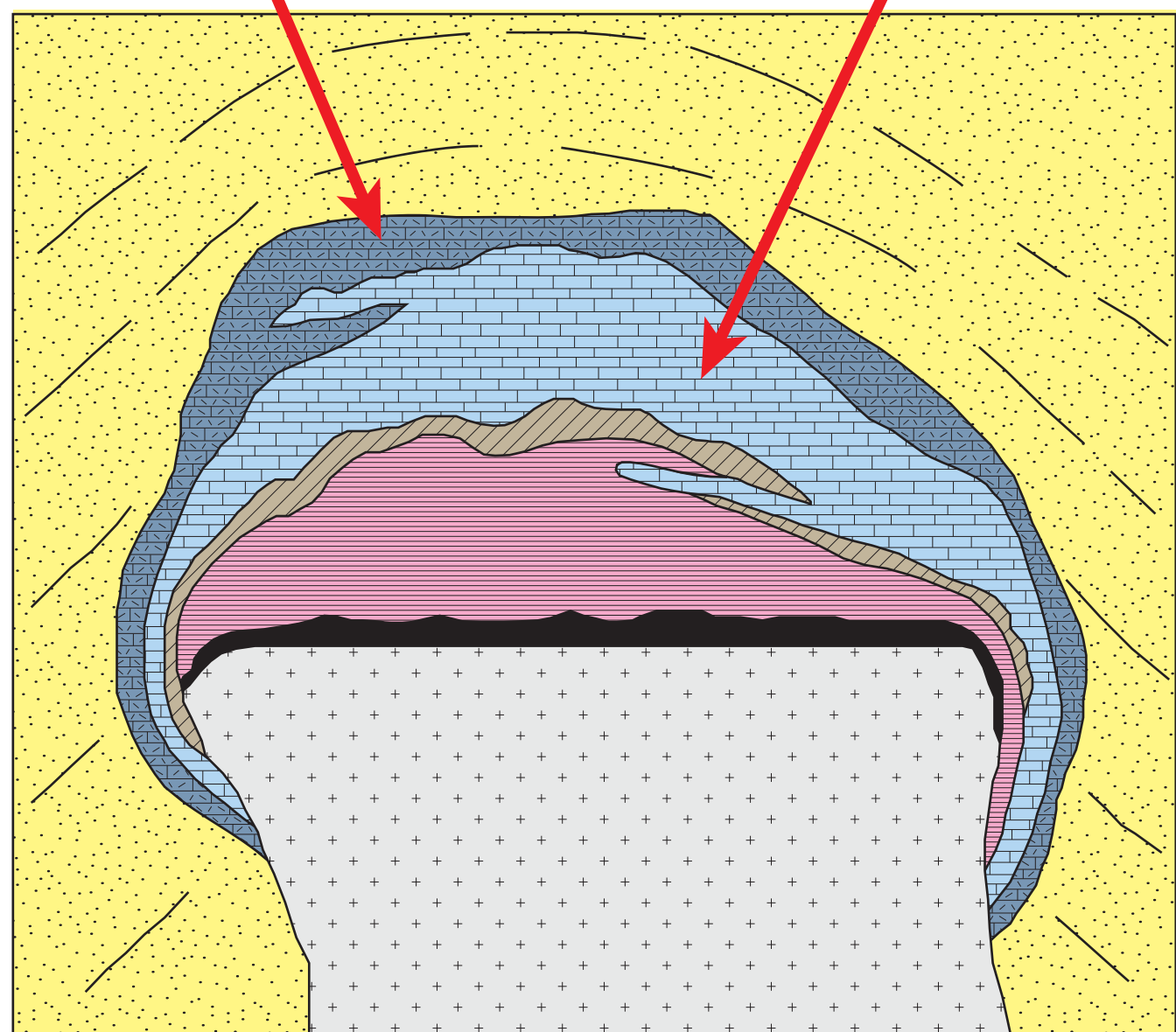
### TEXAS GULF COAST CALCITE CAPROCKS:

#### UPPER VARIEGATED

Upper variegated commonly contains clastic detritus and variegated clasts of carbonate in a carbonate matrix. These carbonate clasts and matrix contain irregular segregations of a later, more coarsely crystalline calcite. All gulf coast diapirs containing carbonate caprocks contain this fabric.

#### LOWER BANDED

Lower banded or "zebra textured" zone. Numerous calcite stages form horizontal bands that are commonly cross-cut by late-stage calcite veins. Roughly half of gulf coast diapirs containing carbonate caprocks contain this fabric.



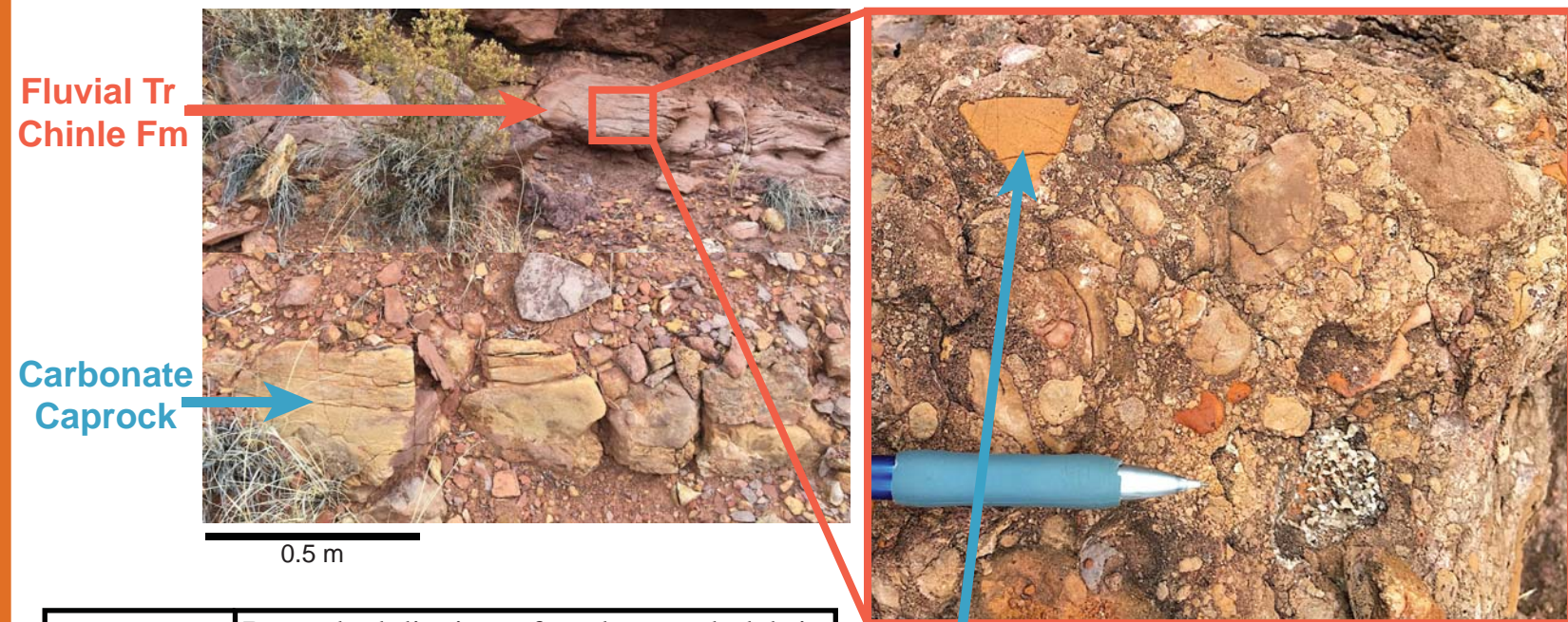
Cross sectional view of a typical caprock bearing salt diapir showing generalized caprock lithologic zonation. Not to scale. Modified from Kyle and Posey, 1991.

#### EXPLANATION

- Cenozoic sediments
- Variegated calcite caprock
- Banded calcite caprock
- Gypsum caprock
- Anhydrite caprock
- Salt dissolution zone
- Salt stock

## CAPROCK CLASTS IN OVERLYING STRATA

### Gypsum Valley, Paradox Basin, CO



#### Carbonate Caprock Clasts

- Fabric type of caprock clasts within the overlying Chinle Formation are all microcrystalline massive dolomite
- This suggests that massive microcrystalline dolomitic capstone was the original fabric type at the Gypsum Valley salt wall.

## CONCLUSIONS

The development of a caprock classification scheme has allowed for the communication between researchers in regard to caprocks found at the salt-sediment interface around the world. Therefore, it has provided a means for comparison of the similarities and differences of caprock at multiple localities.

#### SIMILARITIES

#### DIFFERENCES

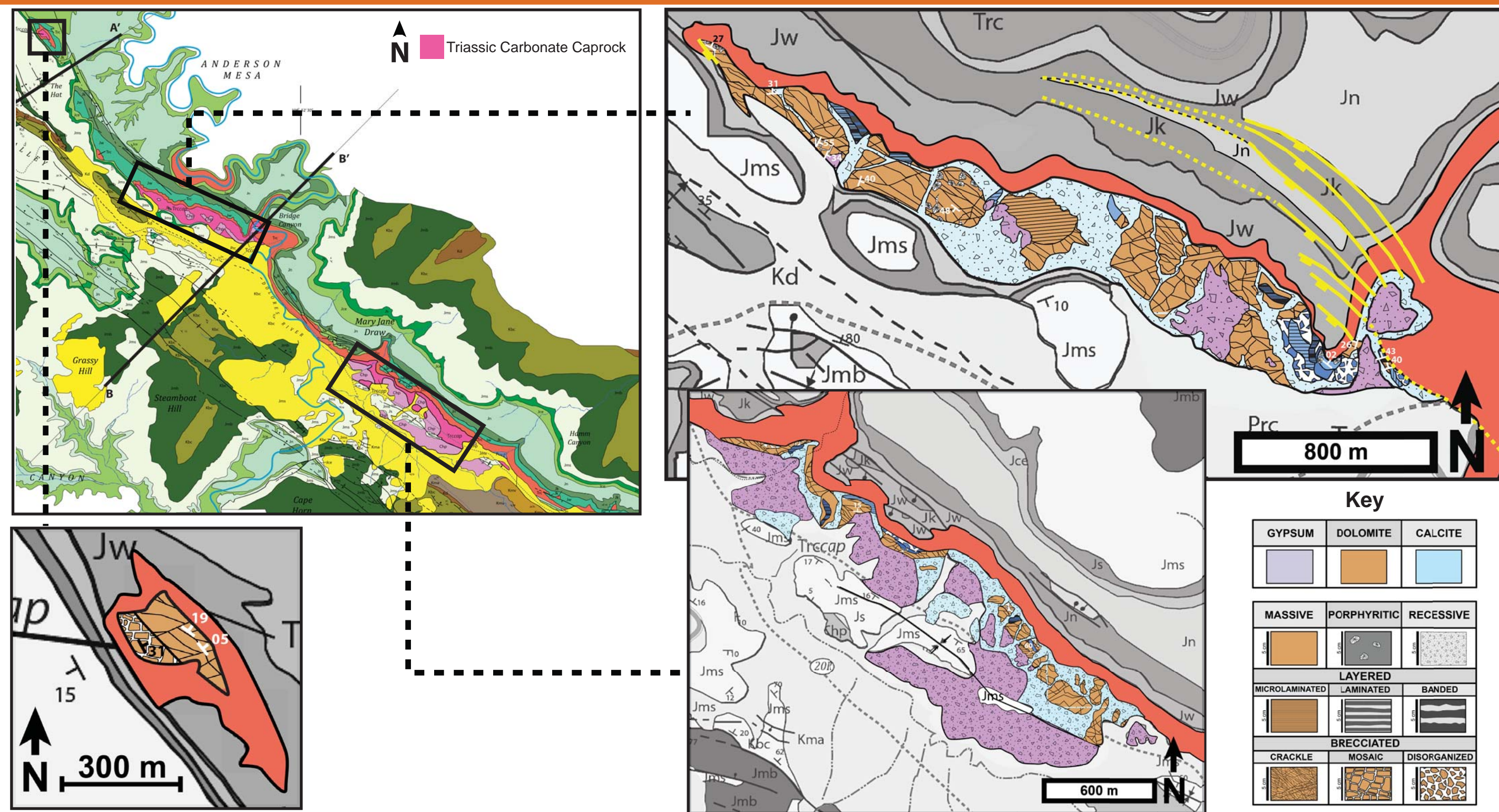
- Evidence at all localities suggests that the massive fabric is the first to develop, and that the remaining fabrics have been diagenetically superimposed.
- At Patawarta, clasts from the Callanna (i.e. quartzites, metaigneous) stratigraphy are incorporated into the caprock. We have not observed precursor lithologies incorporated in the Paradox Basin caprock.
- All of the proposed fabrics are found at both localities – with variations.
- Both gypsum and carbonate caprock are present at the Gypsum Valley (GV) salt wall. The caprock at Patawarta is entirely carbonate.
- The porphyritic, layered and brecciated fabric types exhibit a patchy distribution and are rarely correlative.
- The GV caprocks contain dolomite and calcite caprock, whereas at Patawarta, the primary mineralogy is dolomite with only minor calcite present as late-stage vein fills.

## CAPROCK CLASSIFICATION BASED ON FABRIC

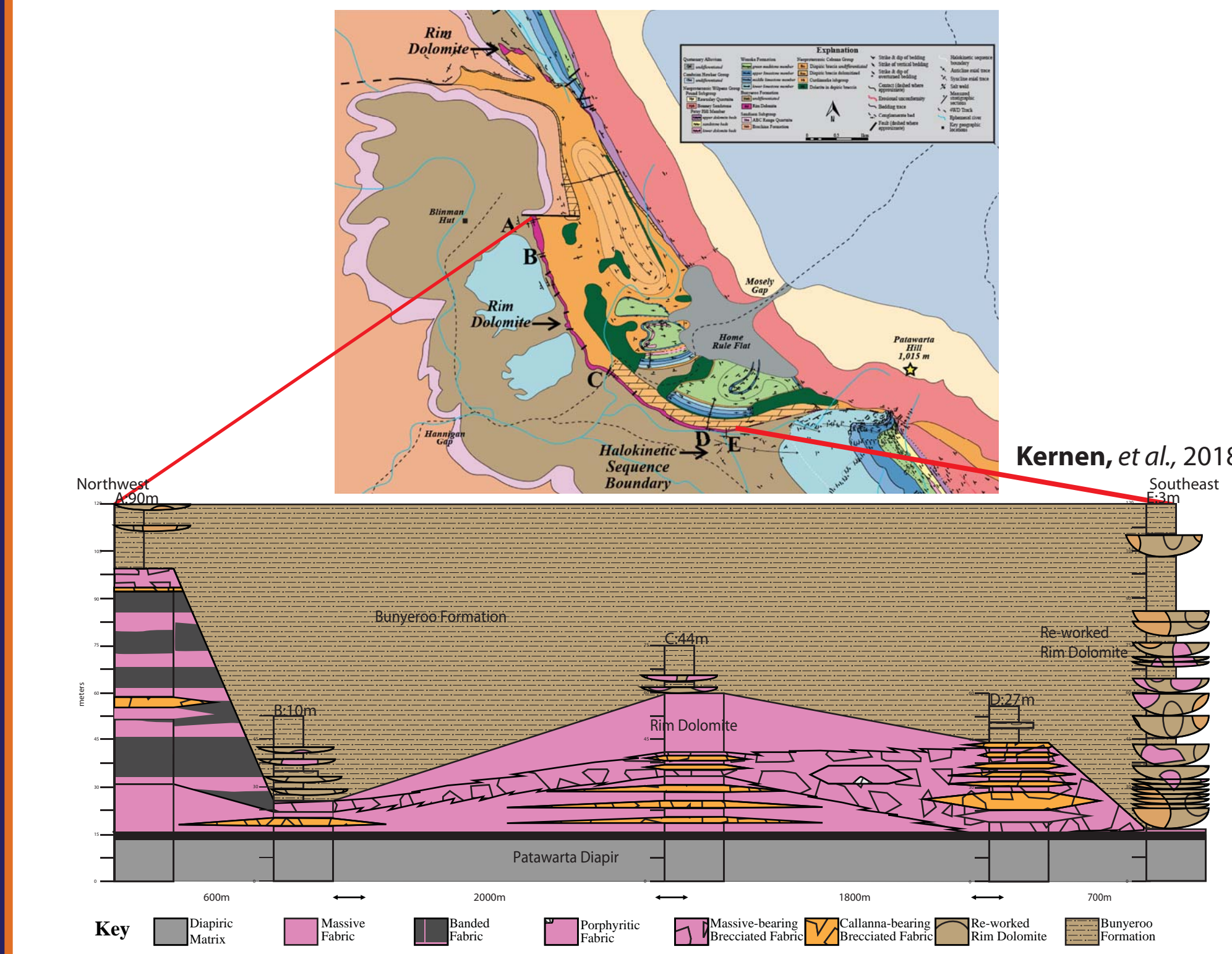
	MASSIVE	PORPHYRITIC	LAYERED			BRECCIATED		
			MICROLAMINATED	LAMINATED	BANDED	CRACKLE	MOSAIC	DISORGANIZED
DESCRIPTION	Massive fabrics consist of a homogeneous mineralogy and crystal size, and lack any internal structure.	Porphyritic fabrics consist of two distinct crystal size populations, one significantly larger than the other.	Microlaminated fabrics consist of 1-3 mm thick laminae.	Laminated fabrics consist of 3-10 mm thick laminae.	Banded fabrics consist of laminae greater than 10 mm thick.	Crackle breccias contain clasts that display little relative displacement.	Mosaic breccias consist of clasts that are loosely fitted together. Most clast boundaries are typically oriented parallel to each other.	Disorganized breccias consist of spatially independent clasts. Clast boundaries are rarely parallel to one another.
SCHEMATIC DIAGRAM								
FABRIC EXAMPLES								

## PROOF OF CONCEPT

### GYPSUM VALLEY SALT WALL, PARADOX BASIN, CO



### PATAWARTA DIAPIR, FLINDERS RANGES, SA



## EVAPORITE NOMENCLATURE

NODULAR ANHYDRITE				GYPSUM	
CHICKEN WIRE	ENTROLITHIC	AGGREGATE	ELONGATE	LENTICULAR	ROSETTES

## IMPORTANCE OF CAPROCK

- Petroleum system timing** - when and how do these caprocks form? Timing of hydrocarbon migration
- Misidentified stratigraphy** - implications on well top pics and overall cross-section structure
- Drilling hazard** - misidentified lithology with unknown fluids and pressures
- Additional reservoir** - high porosity and permeability depending on fabric type

## REFERENCES

- Kern, R.A., Giles, K.A., Poe, P.L., Gannaway, E.C., Fiduk, J.C., Rowan, M.R., Hearon, T.E. (2018). Origin of the Neoproterozoic Rim Dolomite as Lateral Carbonate Caprock, Patawarta Salt Sheet, Flinders Ranges, South Australia. Australian Journal of Earth Sciences. Flinders Ranges World Heritage Site Nomination.
- Kyle, J. R., and Posey H. H. (1991). Halokinesis, Cap Rock Development, and Salt Dome Mineral Resources. Evaporites, Petroleum and Mineral Resources. Ed. J. L. Melvin. N. p.: Elsevier. p. 413 - 474.
- Meyer, F.O. (1989). Anhydrite Classification According to Structure. Linked-In Article. Published March 8, 2016.