

QAnalySeries – a cross-platform time series tuning and analysis tool

Sergey Kotov, Heiko Pälike

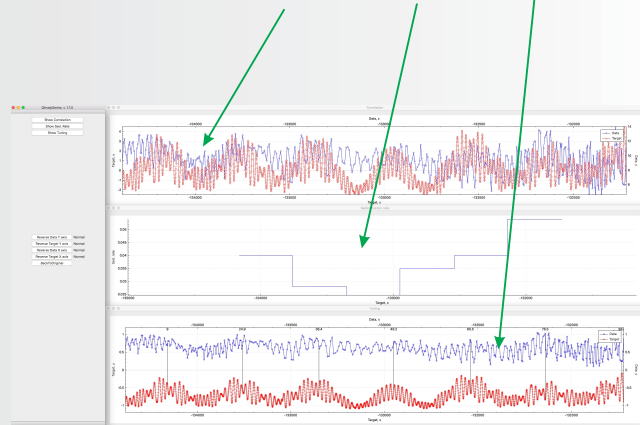
MARUM - Center for Marine Environmental Sciences at the University of Bremen, Germany, skotov@marum.de

Abstract

We introduce a computer program for time series tuning and analysis. The well known in paleo-climatic community program AnalySeries after Paillard et al. is restricted to the Mac OS (32-bit) and, according to Apple plans to move entirely onto the 64-bit system, it will not be supported in the future upgrades of Macintosh OS. QAnalySeries is an attempt to re-implement the major functionality of AnalySeries thus providing the community with a useful tool. QAnalySeries is written using Qt SDK as a free software and can be run on Macintosh, Windows and Linux systems.

1. Main GUI

The graphical design of the program is organised in the same logic as the original AnalySeries. Three main windows are Correlation, Sedimentation rate, and Tuning graph.

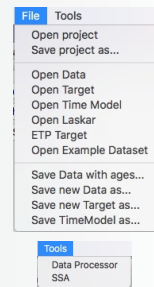
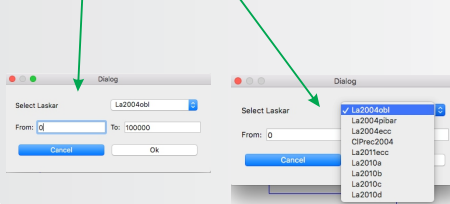


Data, target, time model must be read from a text two columns file with delimiters (space, tab, ",", "."). First column must be depth or time in increasing order. Alternative way can be a drag and drop of your data, target, and time model file onto the top, bottom part of the tuning window and sedimentation rate window correspondingly. Left window has buttons to reverse data and target graphs vertically or horizontally.

To add a tie: select a point on the data or target plot, hold "Shift" + left mouse click on a corresponding target or data point. A connecting line will appear; data will be automatically recalculated if more than one tie is present. To delete a tie, hold the "Alt" buttons and click left mouse button on the tie ("Shift-Alt-LeftMouseButtonClick" to delete a tie on Ubuntu).

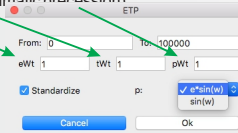
2. Main menu:

File: Open project – to open previously saved project.
Save project as... – to save a project for a next re-use.
Open Data (Target, Time model) – see instructions above.
Open Laskar – creates a target using one of the Laskar's astronomic solutions from a database



3. Main menu:

File (continuation): ETP Target – creates a target using a linear combination of Laskar's 2004 solutions (eccentricity, tilt, climatic precession)

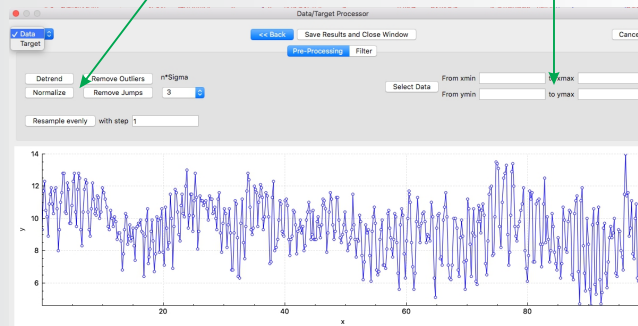


Open Example Dataset – open a disturbed sinusoid as data and a sinusoid as target for a quick start.

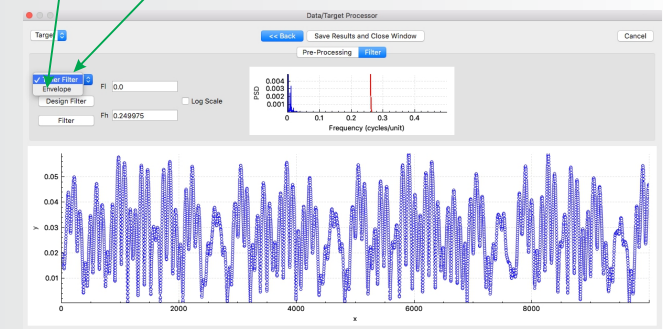
Save Data with ages... – saves original data file with an extra column of ages.
Save new Data as... – saves processed data into a new file.
Save new Target as... – saves processed target into a new file.
Save Time Model as... – saves the time model into the two column text file based on the tie points.

4. Main menu:

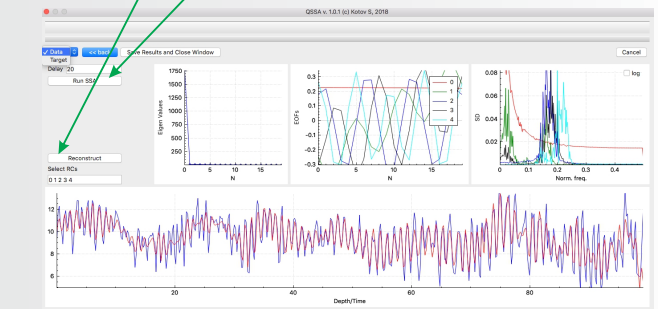
Tools: Data Processor -> Pre-Processing tab – process your data or target: de-trend, normalize, remove outliers (based on standard deviation limits of the data), remove jumps (based on standard deviation limits of the second derivatives approximation of data), resample evenly with a chosen step (important for filtering), sub-select data or target using min-max values.



5. Data Processor -> Filter tab – filter data or target using Taner's filter or calculate an envelope of the signal (based on Hilbert transform)



6. Data Processor -> SSA – de-compose data or target on empirical orthogonal components and reconstruct a signal with selected components using Singular Spectrum Analysis.



To Do:

1. Calculate insolation target
2. ...

References:

Paillard D., L. Labeyrie and P. Yiou (1996), Macintosh program performs time-series analysis, Eos Trans. AGU, 77: 379.

Download executable (Windows, Mac, Ubuntu):
<https://sites.google.com/site/geokotov/software>