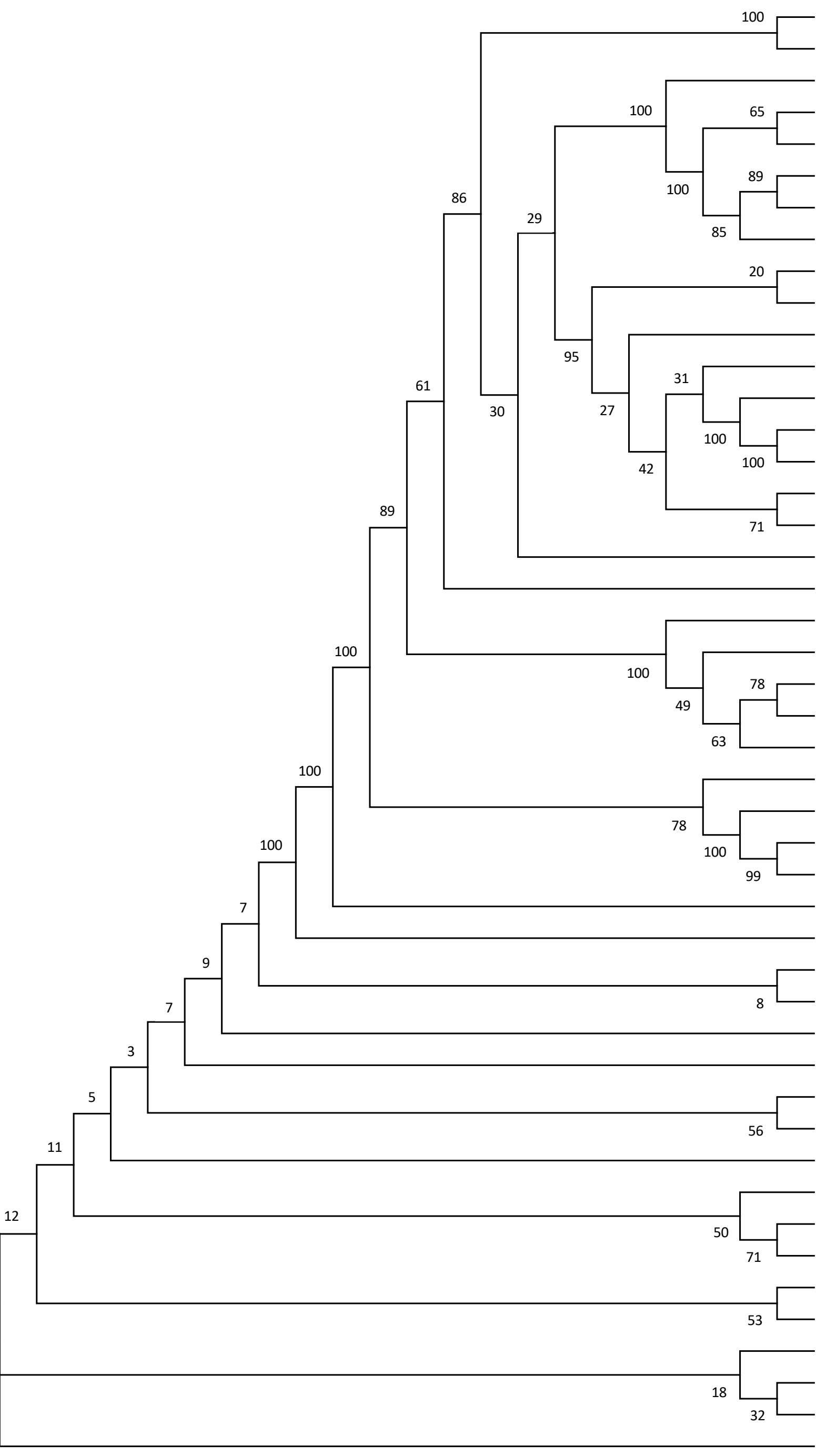
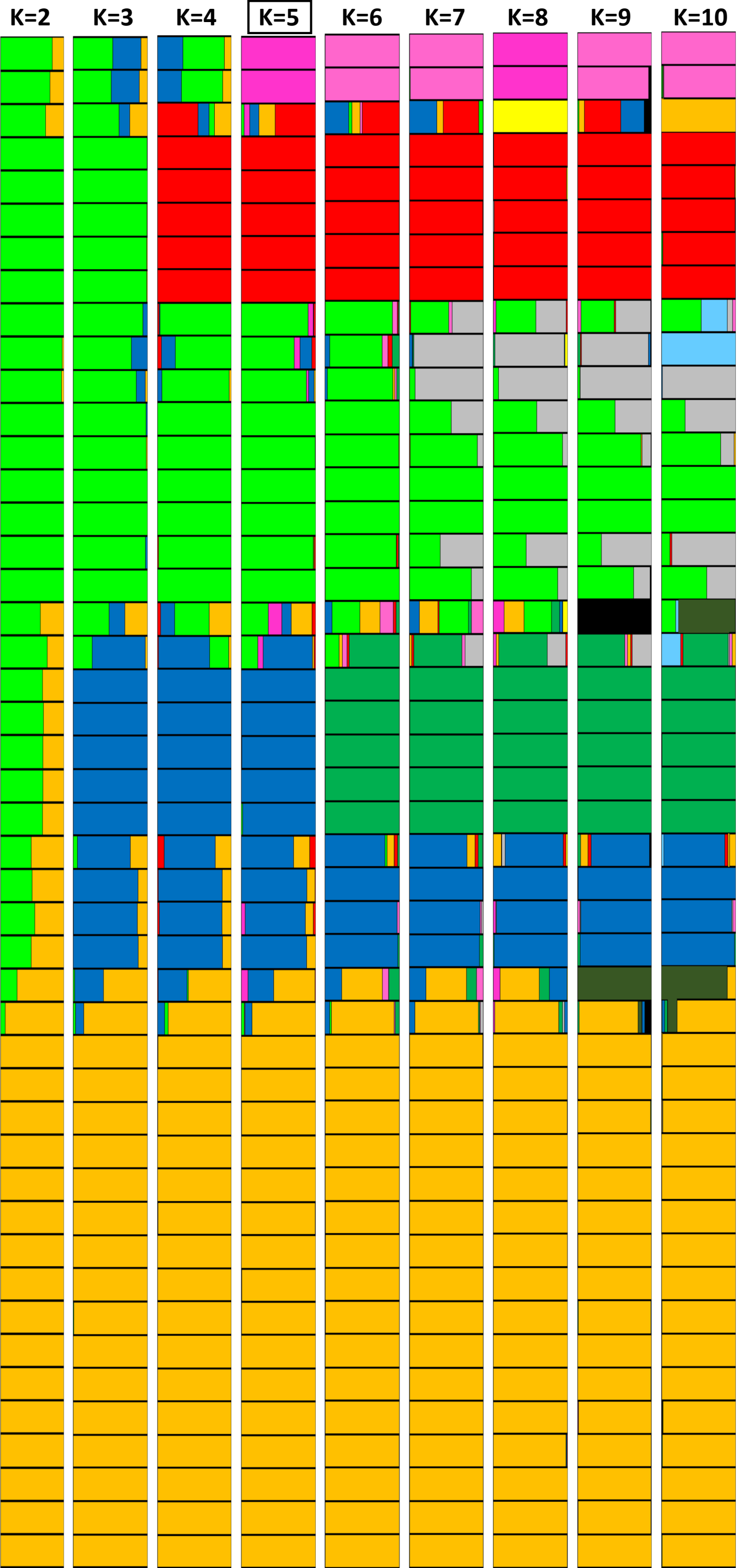


Rice accessions



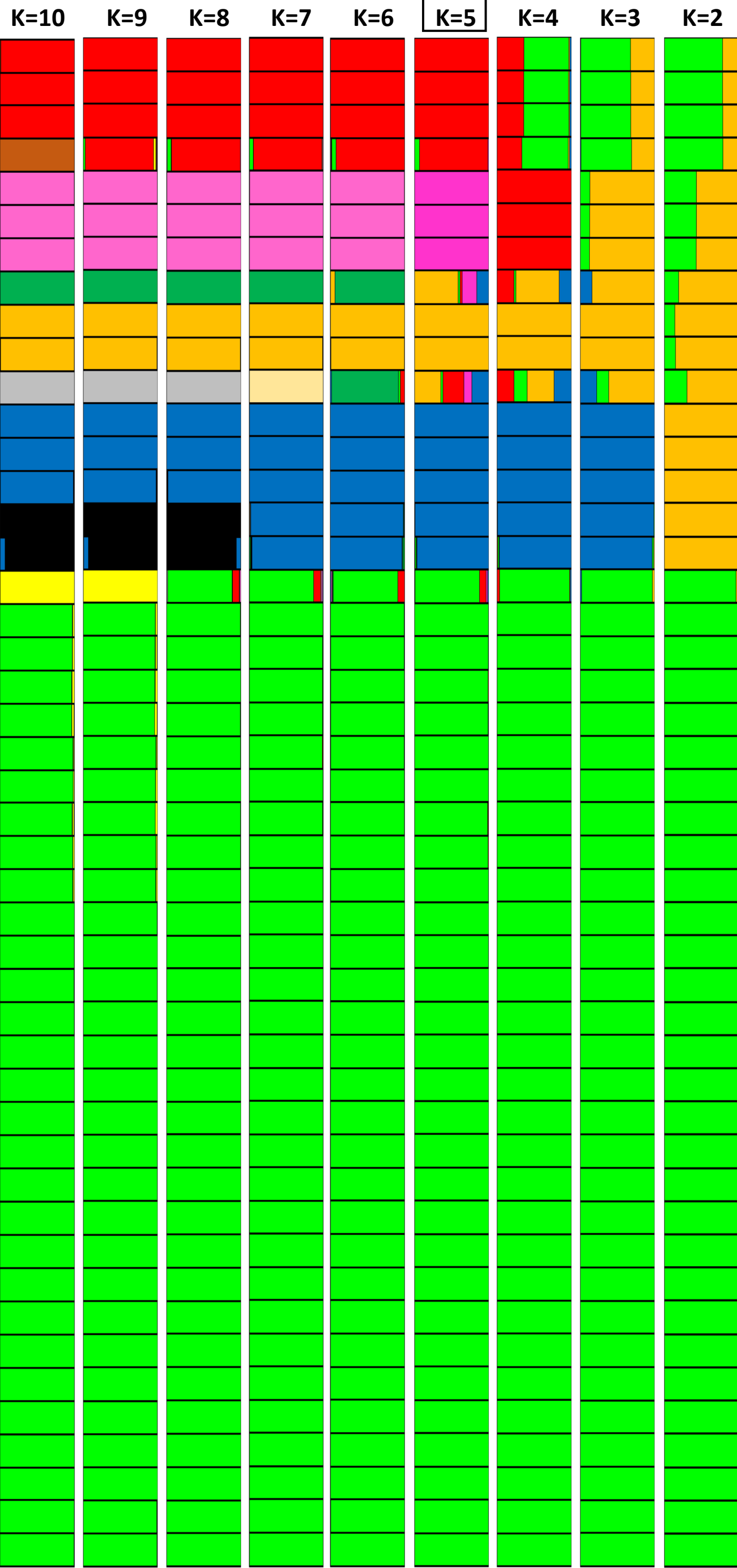
Membership probabilities



XG-Q-N06  
XG-Q-L13  
HY-Q-J17  
HY-Q-J18  
HY-Q-J08  
HY-Q-J11  
HY-Q-J05  
HY-Q-J19  
AC-X-R17  
AC-X-R09  
AC-X-R20  
AC-X-T11  
AC-X-R16  
AC-X-T09  
AC-X-T16  
AC-X-T21  
AC-X-R23  
BJ-Q-B06  
HO-Q-H05  
HO-Q-H14  
HO-Q-F18  
HO-Q-F05  
HO-Q-H15  
HO-Q-H11  
HO-Q-H06  
HO-Q-F22  
HO-Q-F16  
HO-Q-F13  
BJ-X-V18  
AC-Q-P04  
AC-Q-P25  
BJ-X-V03  
BJ-Q-D15  
BJ-X-V21  
BJ-X-V11  
BJ-Q-D10  
BJ-X-V07  
BJ-Q-D09  
BJ-Q-B05  
HO-Q-F19  
AC-Q-P21  
AC-X-T18  
AC-Q-P03  
BJ-Q-B09  
BJ-X-V13  
AC-Q-P06

CH1900\_(AC-X-R20)  
CH1897\_(AC-X-R09)  
CH1898\_(AC-X-R16)  
CH1890\_(XG-Q-N06)  
CH1861\_(BJ-Q-D10)  
CH1892\_(AC-Q-P04)  
CH1868\_(HO-Q-F05)  
CH1869\_(HO-Q-H14)  
CH1874\_(HO-Q-H11)  
CH1899\_(AC-X-R17)  
CH1889\_(XG-Q-L13)  
CH1893\_(AC-Q-P06)  
CH1908\_(BJ-X-V07)  
CH1882\_(HY-Q-J05)  
CH1885\_(HY-Q-J17)  
CH1877\_(HO-Q-F18)  
CH1859\_(BJ-Q-B05)  
CH1862\_(BJ-Q-D15)  
CH1891\_(AC-Q-P03)  
CH1887\_(HY-Q-J19)  
CH1884\_(HY-Q-J11)  
CH1858\_(BJ-Q-B06)  
CH1865\_(HO-Q-F13)  
CH1878\_(HO-Q-F19)  
CH1879\_(HO-Q-F22)  
CH1863\_(BJ-Q-D09)  
CH1866\_(HO-Q-F16)  
CH1886\_(HY-Q-J18)  
CH1896\_(AC-Q-P25)  
CH1895\_(AC-Q-P21)  
CH1873\_(HO-Q-H05)  
CH1913\_(BJ-X-V18)  
CH1911\_(BJ-X-V13)  
CH1907\_(BJ-X-V03)  
CH1910\_(BJ-X-V11)  
CH1906\_(AC-X-T21)  
CH1903\_(AC-X-T11)  
CH1901\_(AC-X-R23)  
CH1905\_(AC-X-T18)  
CH1902\_(AC-X-T09)  
CH1904\_(AC-X-T16)  
CH1871\_(HO-Q-H15)  
CH1883\_(HY-Q-J08)  
CH1857\_(BJ-Q-B09)  
CH1915\_(BJ-X-V21)  
CH1876\_(HO-Q-H06)

Membership probabilities



CH1900\_(AC-X-R20)  
CH1897\_(AC-X-R09)  
CH1898\_(AC-X-R16)  
CH1890\_(XG-Q-N06)  
CH1861\_(BJ-Q-D10)  
CH1892\_(AC-Q-P04)  
CH1868\_(HO-Q-F05)  
CH1869\_(HO-Q-H14)  
CH1874\_(HO-Q-H11)  
CH1899\_(AC-X-R17)  
CH1889\_(XG-Q-L13)  
CH1893\_(AC-Q-P06)  
CH1908\_(BJ-X-V07)  
CH1882\_(HY-Q-J05)  
CH1885\_(HY-Q-J17)  
CH1877\_(HO-Q-F18)  
CH1859\_(BJ-Q-B05)  
CH1862\_(BJ-Q-D15)  
CH1891\_(AC-Q-P03)  
CH1887\_(HY-Q-J19)  
CH1884\_(HY-Q-J11)  
CH1858\_(BJ-Q-B06)  
CH1865\_(HO-Q-F13)  
CH1878\_(HO-Q-F19)  
CH1879\_(HO-Q-F22)  
CH1863\_(BJ-Q-D09)  
CH1866\_(HO-Q-F16)  
CH1886\_(HY-Q-J18)  
CH1896\_(AC-Q-P25)  
CH1895\_(AC-Q-P21)  
CH1873\_(HO-Q-H05)  
CH1913\_(BJ-X-V18)  
CH1911\_(BJ-X-V13)  
CH1907\_(BJ-X-V03)  
CH1910\_(BJ-X-V11)  
CH1906\_(AC-X-T21)  
CH1903\_(AC-X-T11)  
CH1901\_(AC-X-R23)  
CH1905\_(AC-X-T18)  
CH1902\_(AC-X-T09)  
CH1904\_(AC-X-T16)  
CH1871\_(HO-Q-H15)  
CH1883\_(HY-Q-J08)  
CH1857\_(BJ-Q-B09)  
CH1915\_(BJ-X-V21)  
CH1876\_(HO-Q-H06)

*P. oryzae* isolates

