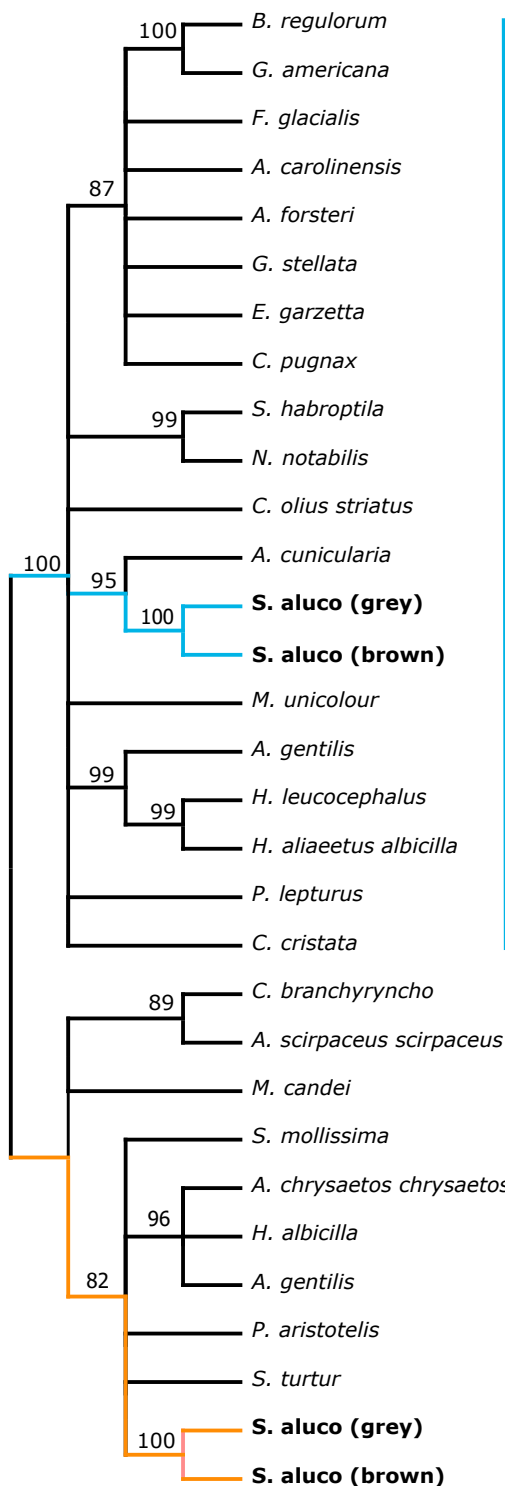
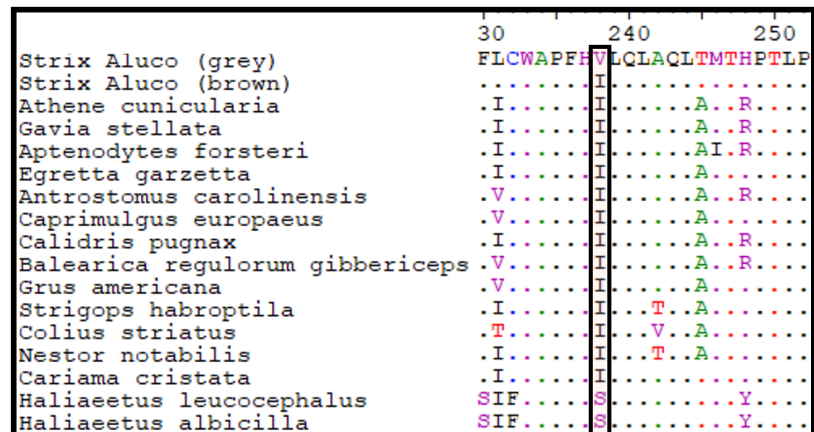


# Phylogenetic relationship of MCHR and putative copy among highly similar bird sequences



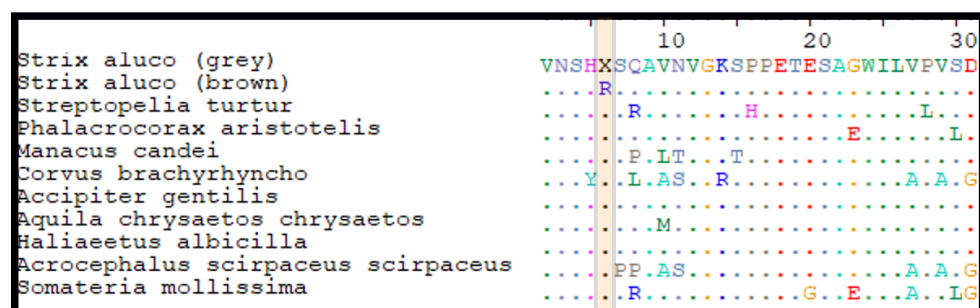
## Melanin concentrating hormone receptor 1 (MCHR1)



238: Isoleucine -> Valine



## Melanin concentrating hormone receptor 1-like (MCHR1-like)



6: Arginine -> gap



## Evolutionary distances

Between copies:  $d = 0.733$ , SE  $\pm 0.333$

MCHR1:  $d = 0.07$ , SE  $\pm 0.02$

MCHR1-like:  $d = 0.05$ , SE  $\pm 0.01$